

How To Use Ftp with CoreFtp

Step One

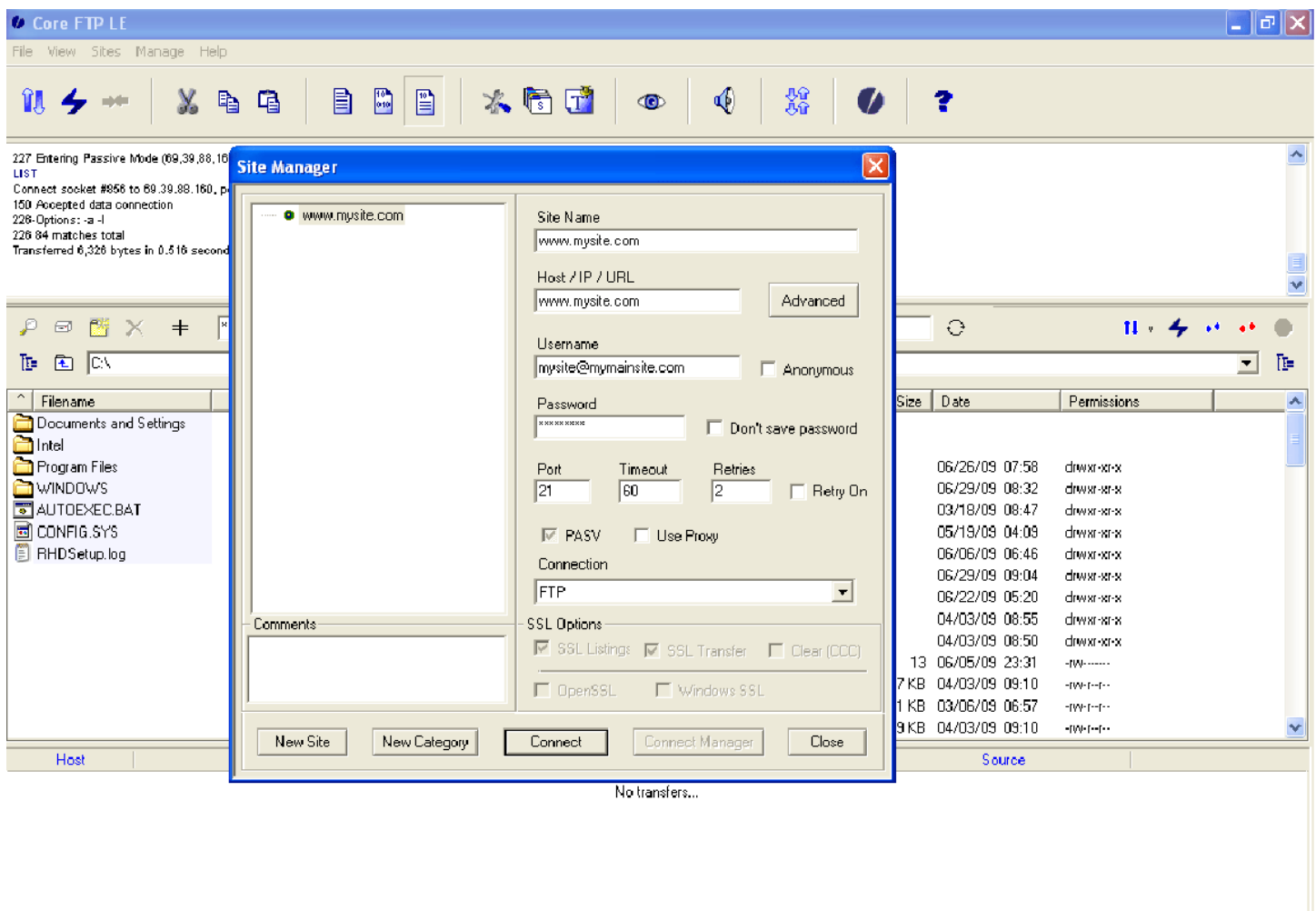
Download the coreftplite.exe software from following link

<http://www.pinnaclecad.com/download/coreftplite.exe>

Run and install the software

Step Two

Put the site details (site name, host, username and password) and click to connect button.



Step three

Remote server is now connected. Now, get some help using **red highlighted text**.

The screenshot shows the Core FTP LE interface. At the top, the status bar displays connection details: "PASV 227 Entering Passive Mode (66,20,88,180,12,152)", "LIST", "Connect socket #880 to 09.39.88.180, port 3224...", "140 Accepted data connection", "226 Options: -a -l", "226 84 matches total", and "Transferred 6.326 bytes in 0.516 seconds". A red arrow points from the "Site manager" text to the "Site manager" icon in the toolbar, with the label "Site manager (To connect the remote)". Another red arrow points from the "To connect or disconnect" text to the "Disconnect" icon in the toolbar.

The interface is split into two main panels. The left panel shows the local file system with the address bar set to "D:\Local Site Promotion\". It contains a table with the following data:

Filename	Size	Date
..		06/30/09 15:26
Global Sites Promotion Re...	106 KB	06/30/09 15:26

A red arrow points from the "Local Path to select the files which you want to upload" text to the address bar. A box labeled "Local Computer" is positioned below the table.

The right panel shows the remote server file system with the address bar set to "ftp://192.168.1.100/". It contains a table with the following data:

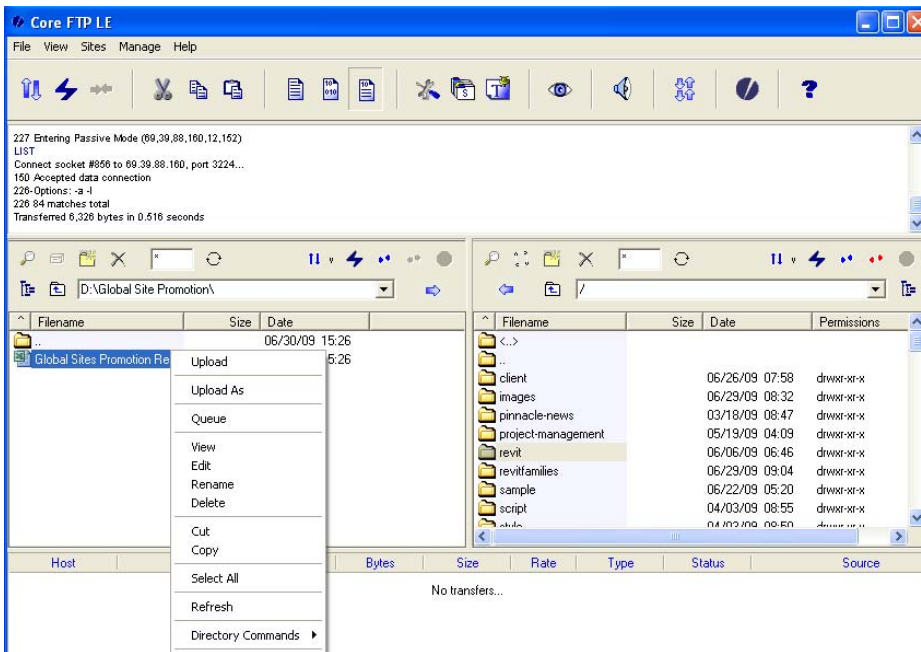
Filename	Size	Date	Permissions
<..>			
..			
client	06/26/09 07:58		drwxr-xr-x
images	06/29/09 08:32		drwxr-xr-x
pinnacle-news	03/18/09 08:47		drwxr-xr-x
project-management	05/19/09 04:09		drwxr-xr-x
revit	06/06/09 06:46		drwxr-xr-x
revitfamilies	06/29/09 09:04		drwxr-xr-x
sample	06/22/09 05:20		drwxr-xr-x
script	04/03/09 08:55		drwxr-xr-x
style	04/03/09 08:50		drwxr-xr-x
.ftpquota	06/05/09 23:31		-w-r-----
3d_modeling.htm	04/03/09 09:10		-w-r--r--
404.shtml	03/06/09 06:57		-w-r--r--
about-us.htm	04/03/09 09:10		-w-r--r--

A red arrow points from the "Remote server path" text to the address bar. Another red arrow points from the "Open the folders where you want to upload your files" text to the "images" folder. A box labeled "Remote Server" is positioned to the right of the table.

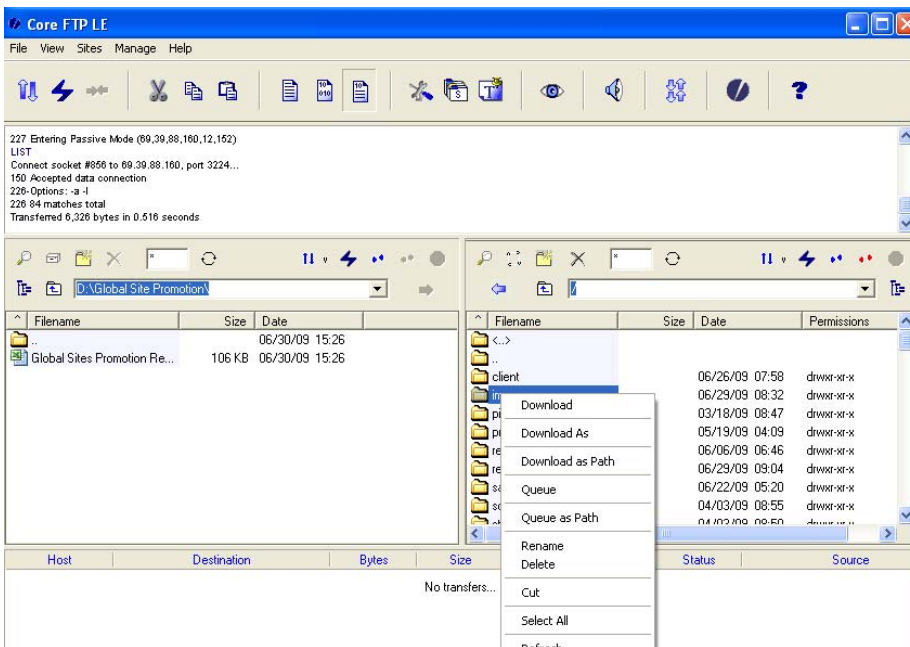
At the bottom of the interface, there is a table with columns: Host, Destination, Bytes, Size, Rate, Type, Status, Source. The status bar below this table displays "No transfers..."

Step four

Select the files from left panel (local computer) which you want to upload.



Select the files from right panel (remote server) which you wants to download.



Thanks for using this tutorial.